

CLASSIFICATION OF TRIPLE-NEGATIVE BREAST CANCERS THROUGH A BOOLEAN NETWORK MODEL OF THE EPITHELIAL MESENCHYMAL TRANSITION



CENTER FOR
COMPLEXITY
& BIOSYSTEMS

University of Milan

25 07 2022
Lake Como School

Caterina A. M. La Porta
www.oncolab.unimi.it



COMPLEXDATA

Stefano Zapperi
www.smmlabi.it



DEPARTMENT OF
ENVIRONMENTAL
SCIENCE AND POLICY



DEPARTMENT OF
PHYSICS
“ALDO PONTREMOLI”

CC&B: CORE PEOPLE

Digital Health
Computational biology
Quantitative Biology
Biophysics



Caterina La Porta

Digital Materials/
Nanomaterials/
Material modelling
Computational biophysics



Stefano Zapperi



Guido Tiana



Roberto Guerra

Probability
Applied mathematics



Giacomo Aletti



Alessandra Micheletti



Giovanni Naldi

BigData/Networks



Paolo Boldi



Sebastiano Vigna

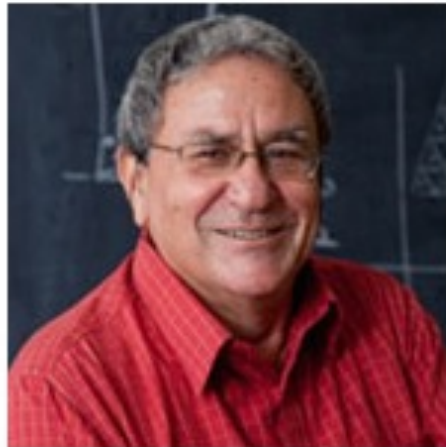
EXTERNAL ADVISORS



Herbert Levine

Rice University (USA)

bioengineering.rice.edu



Eytan Domany

*Weizmann Institute of Science
(Israel)*

www.weizmann.ac.il



Caterina La Porta
Department of Biomolecular Science and
Biotechnology, University of Milan



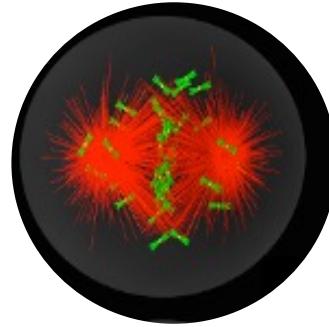
Stefano Zapperi
CNR-IREN, University of Milan

Host: Jim Sethna



EYTAN DOMANY





Digital health: Precision Medicine and
Cancer
Migration
Etc....



Data science, digital health and
sustainable cities



CENTER FOR
COMPLEXITY
& BIOSYSTEMS
University of Milan



Digital Health:
Neurodegenerative diseases



Biosensors for an agriculture 4.0
(Grade)
Fungi and pathologies

IT IS ESTIMATED THAT METASTASIS IS
RESPONSIBLE FOR ABOUT 90% OF THE
CANCER DEATHS DUE
TO SOLID TUMORS

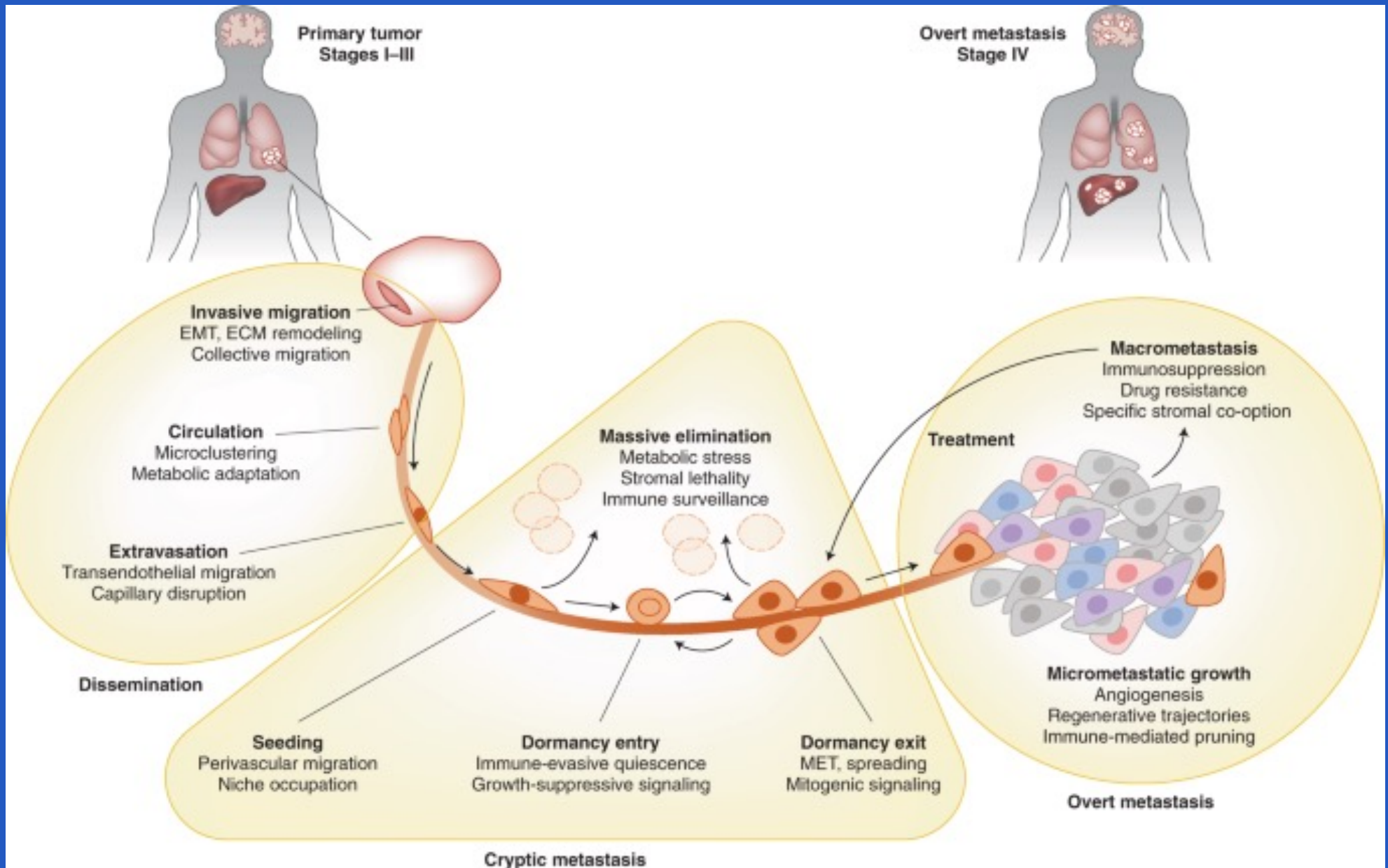
WHY?

1. SPREAD OF THE CELLS IN UNACCESSIBLE SITES
(flow and geometry)

2. AGGRESSIVENESS OF METASTATIC TUMOR CELLS
(seed and soil)

WHY?

1. SPREAD OF THE CELLS IN UNACCESSIBLE SITES (flow and geometry)

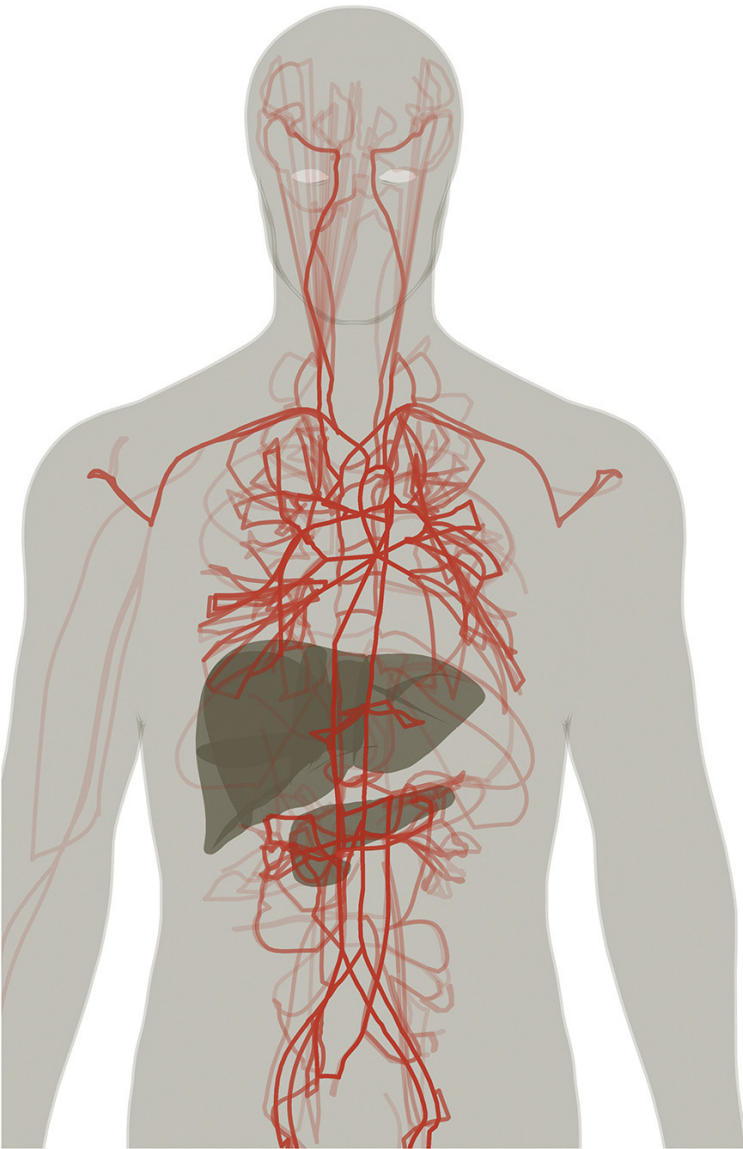


Picture from :Nature Medicine 27, 34-44 (2021)

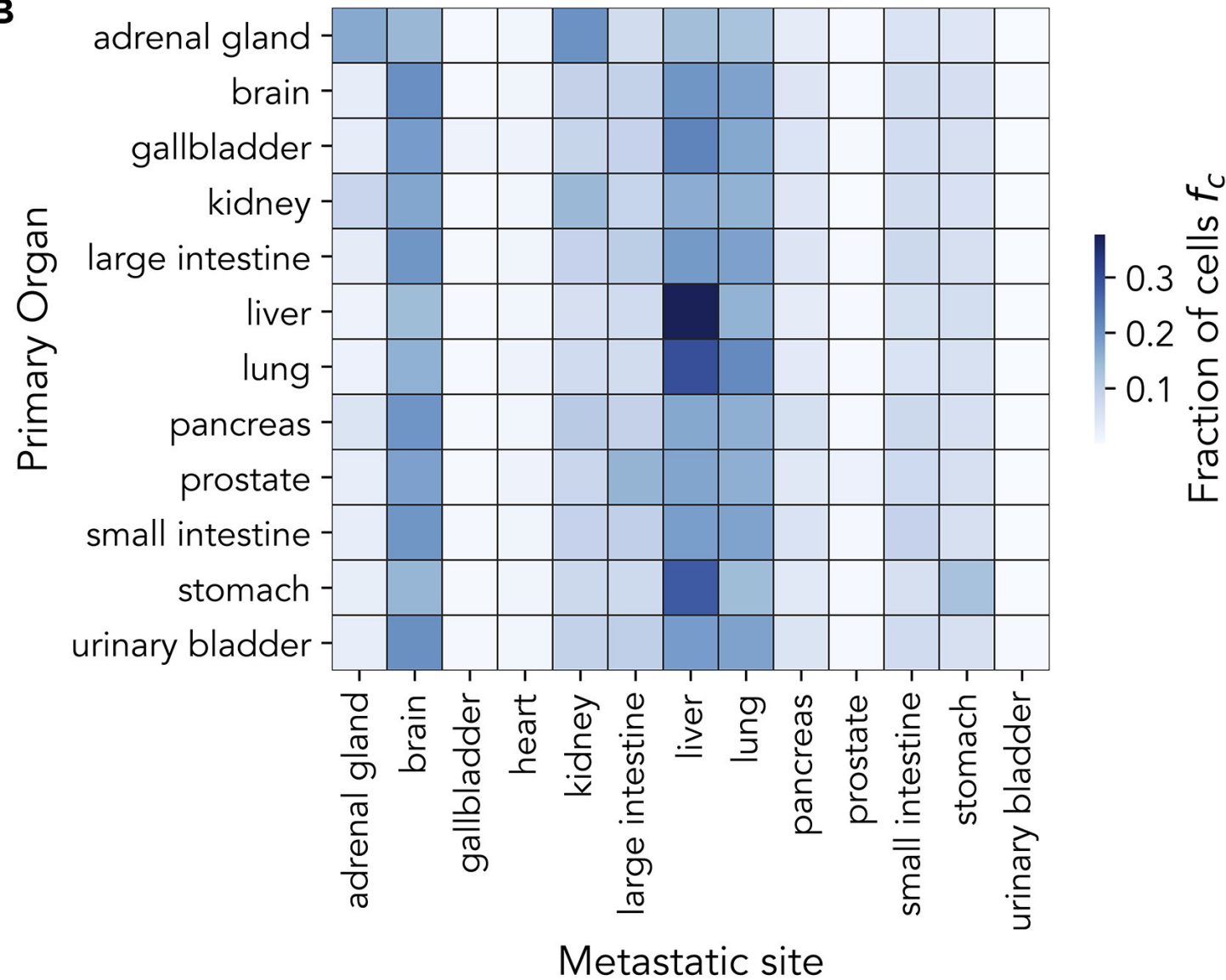
Font-Clos F, Zapperi S, La Porta CA. Blood flow contributions to cancer metastasis. *Iscience*. 2020 May 22;23(5):101073.

LOCATION OF METASTASIS: MODEL PREDICTIONS

A

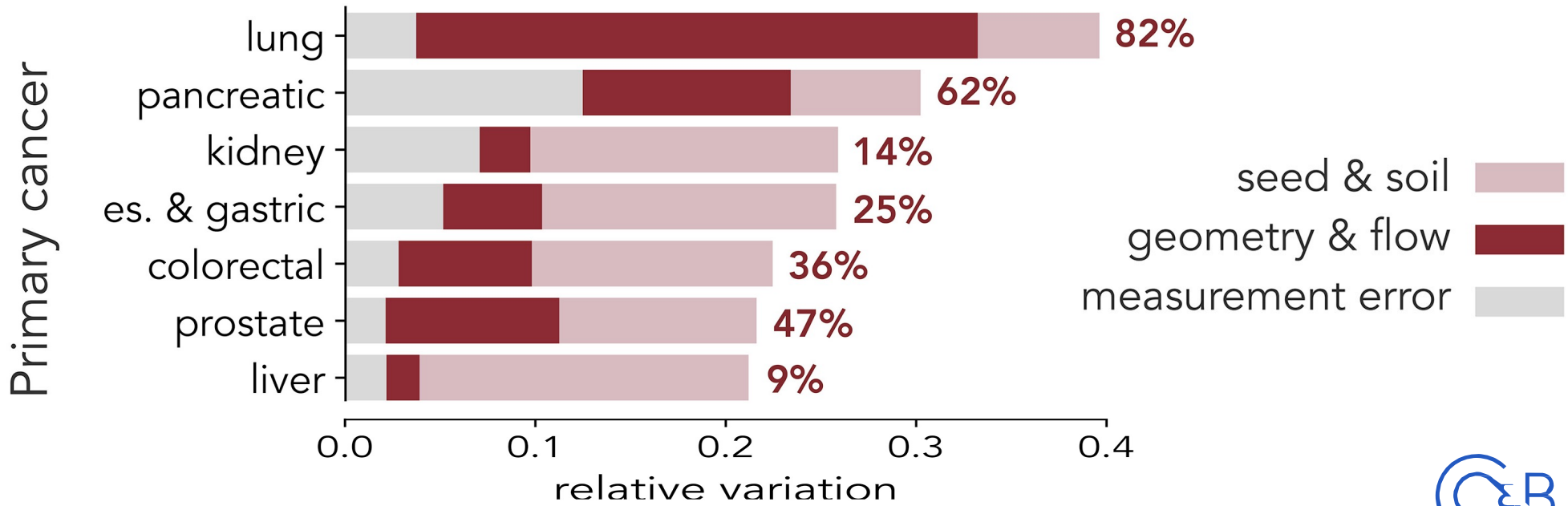
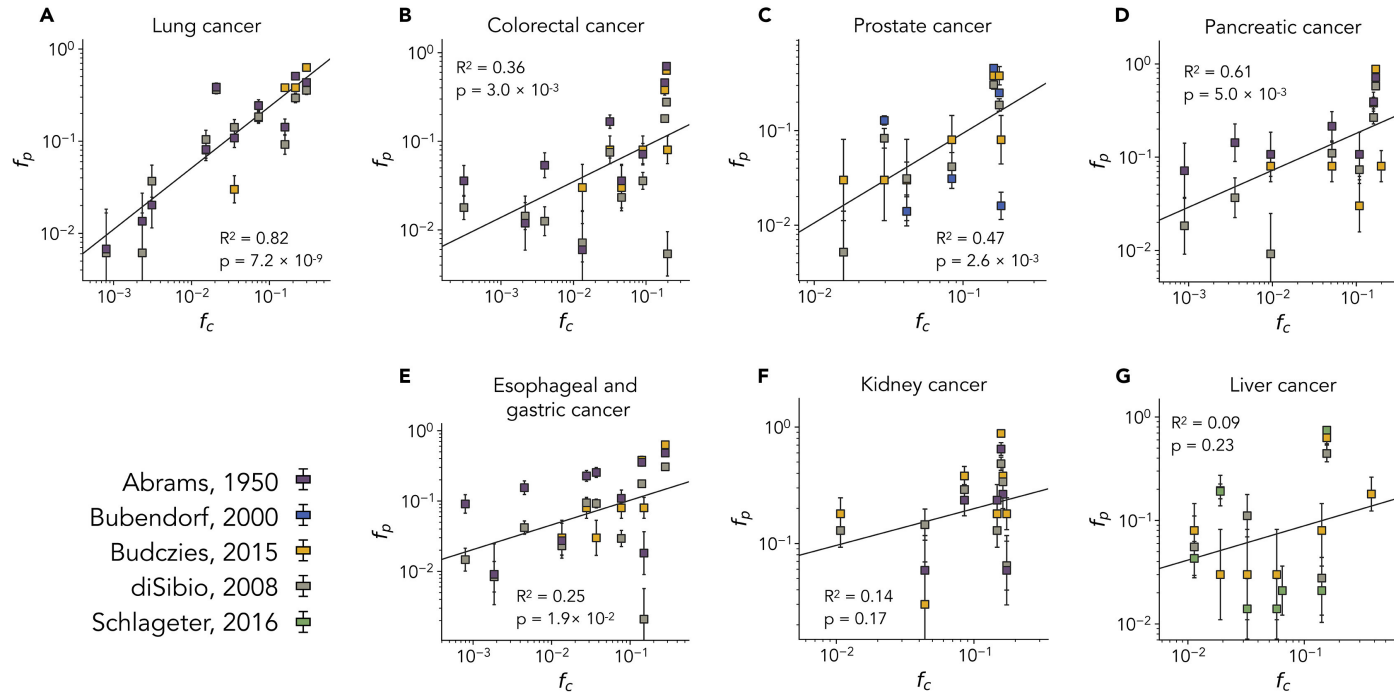


B



Font-Clos F, Zapperi S, La Porta CA. Blood flow contributions to cancer metastasis. *Iscience*. 2020 May 22;23(5):101073.

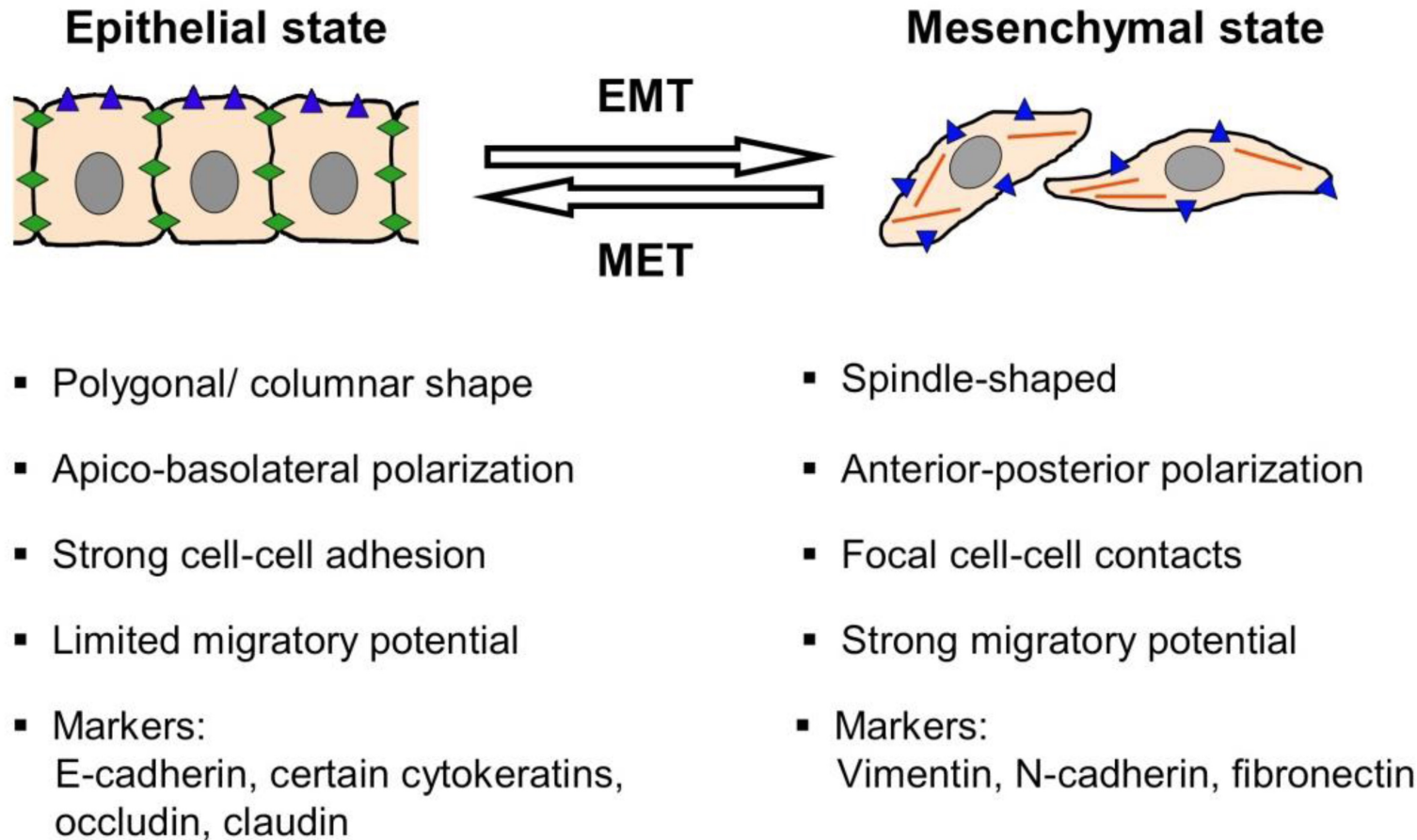
COMPARISON WITH DATA FROM AUTOPSIES



WHY?

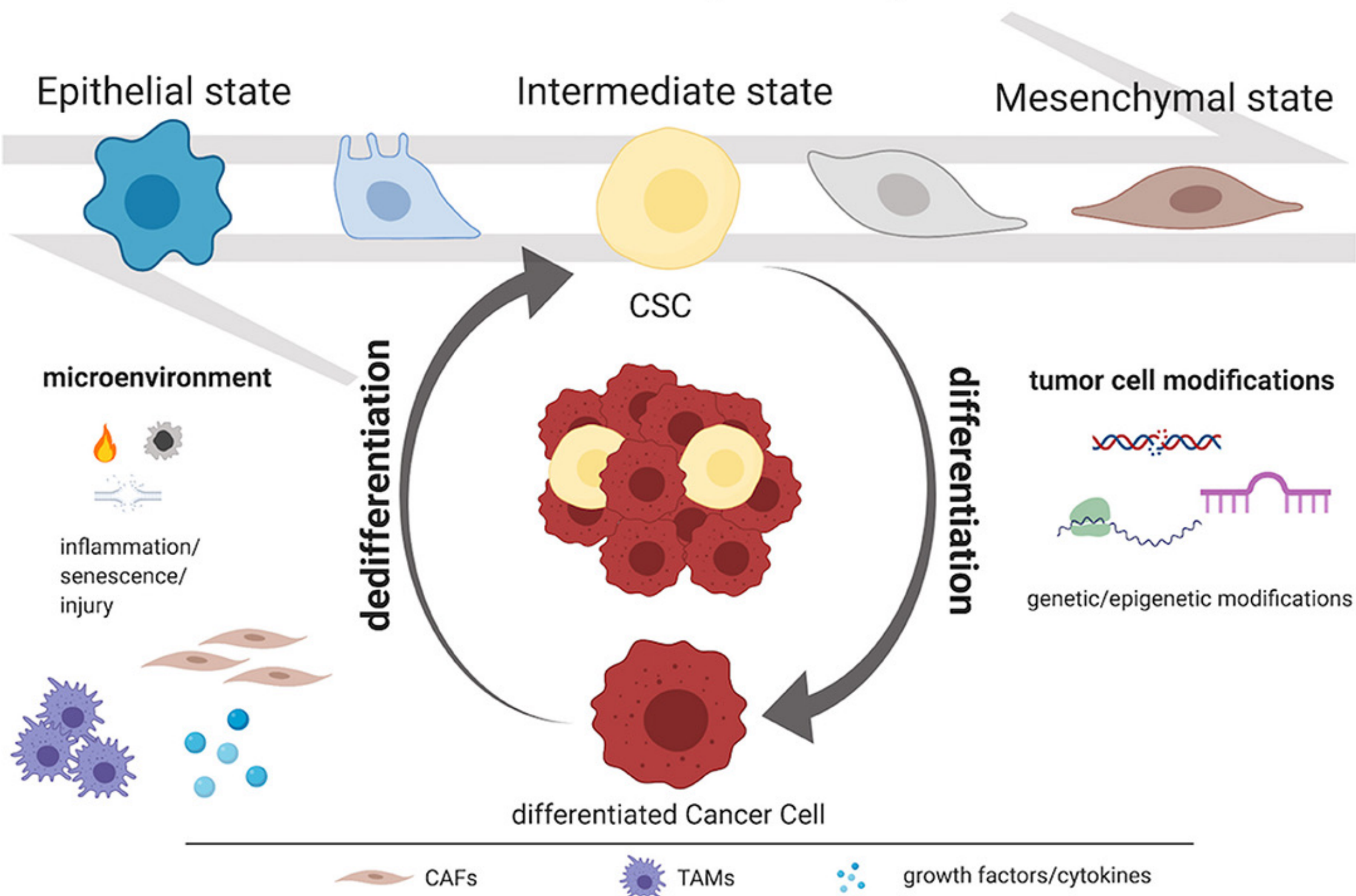
2. AGGRESSIVENESS OF METASTATIC TUMOR CELLS (seed & soil)

EPITHELIAL MESENCHYMAL TRANSITION (EMT)



Phenotypic switching: EMT phenotype/stem genes

Cancer cell plasticity



PHENOTYPIC SWITCHING

Eur. J. Cancer 2007 CD133/ABCG2

Plos One 2010 CXCR6

Plos Computational Biology, 2012.

Scientific Reports , 2012

Scientific Reports 2015

Seminars in Cancer Biology 2017

Seminars in Cancer Biology 2018

PNAS 2018

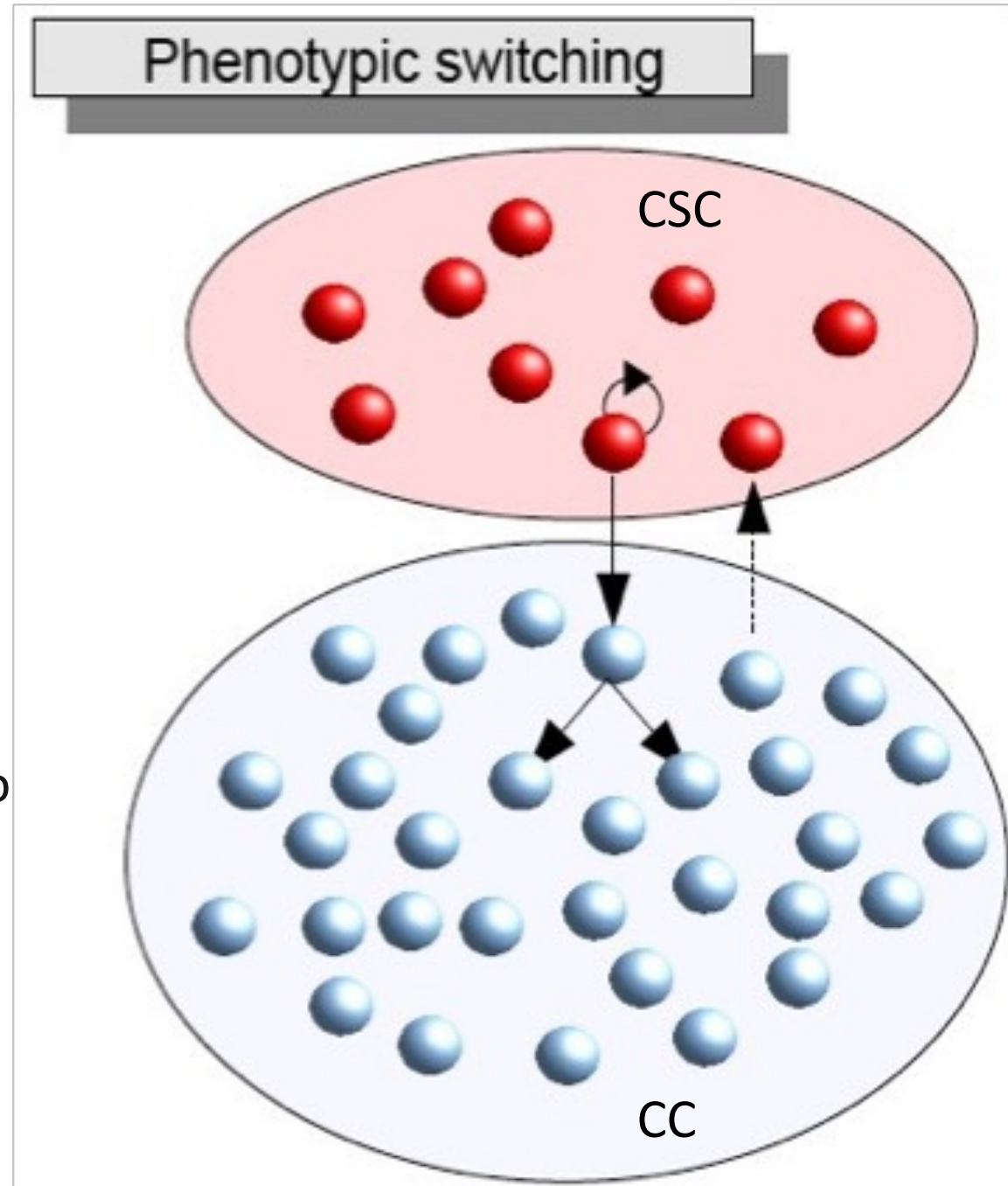
Cancer Microenvironment , 2019

Nature Publisher Journal Systems Bio
and Applications, 2020

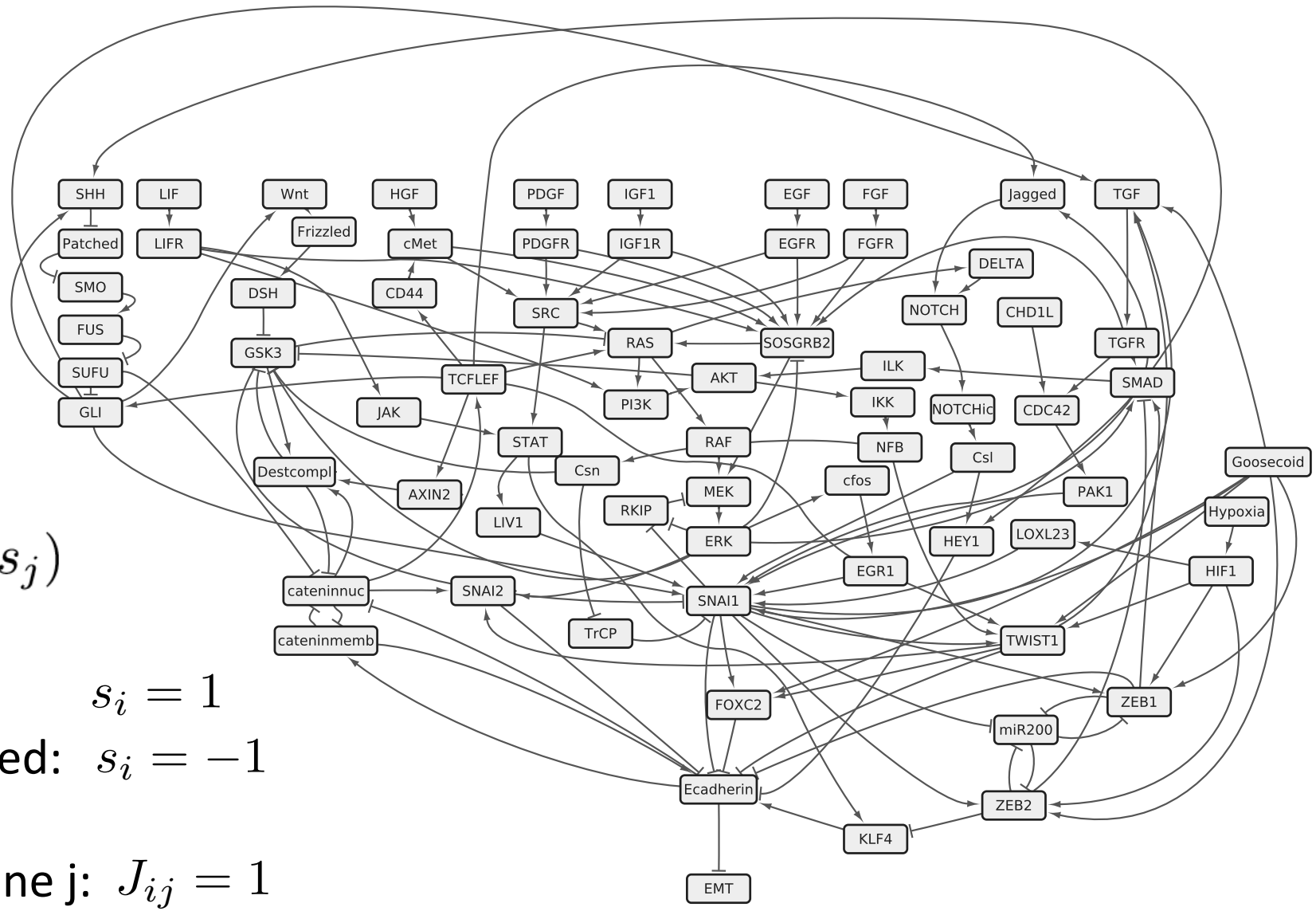
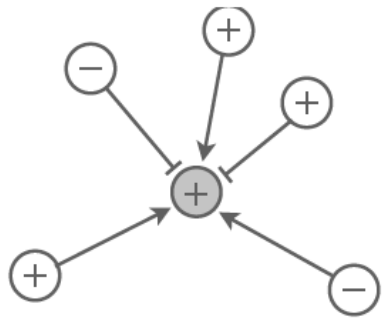
J. Clin. Med. 2020

Cell Systems 2021

Scientific Reports 2022



NETWORK MODEL OF EMT/MET



$$s_i = \text{sign}(\sum_j J_{ij} s_j)$$

Gene i expressed: $s_i = 1$

Gene i not expressed: $s_i = -1$

Gene i activates gene j: $J_{ij} = 1$

Gene i inhibits gene j: $J_{ij} = -1$

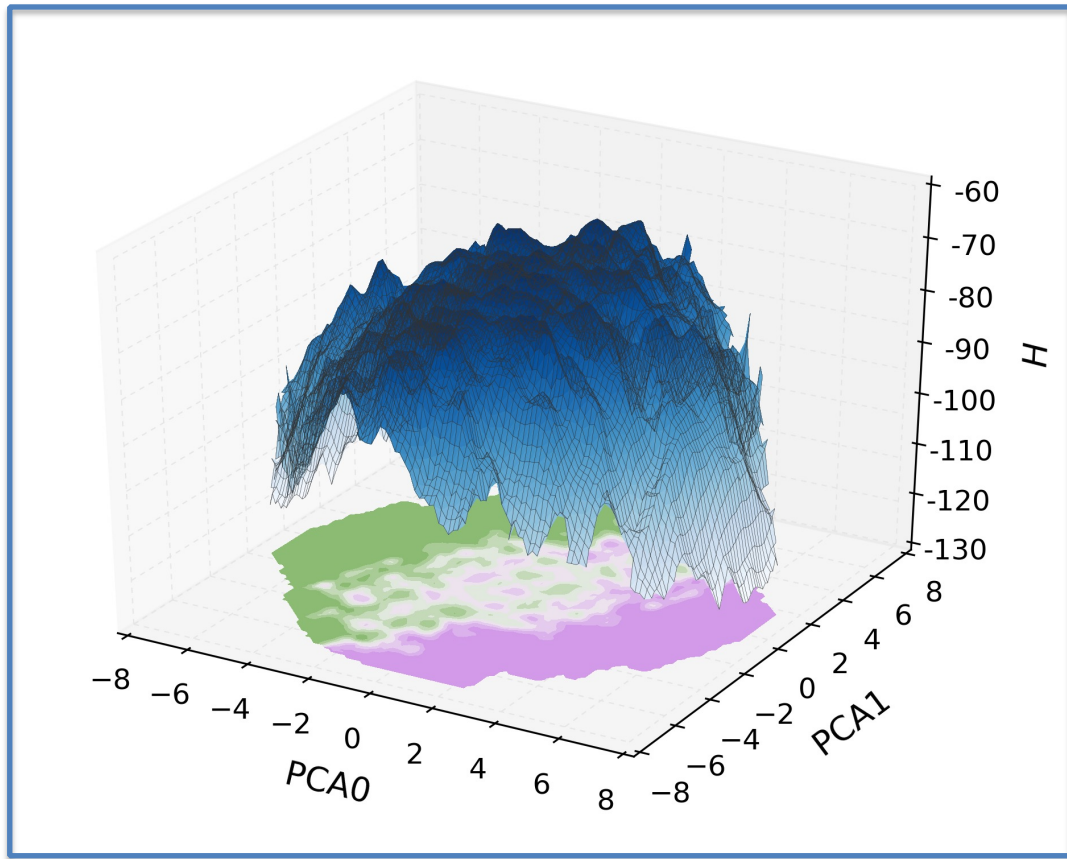
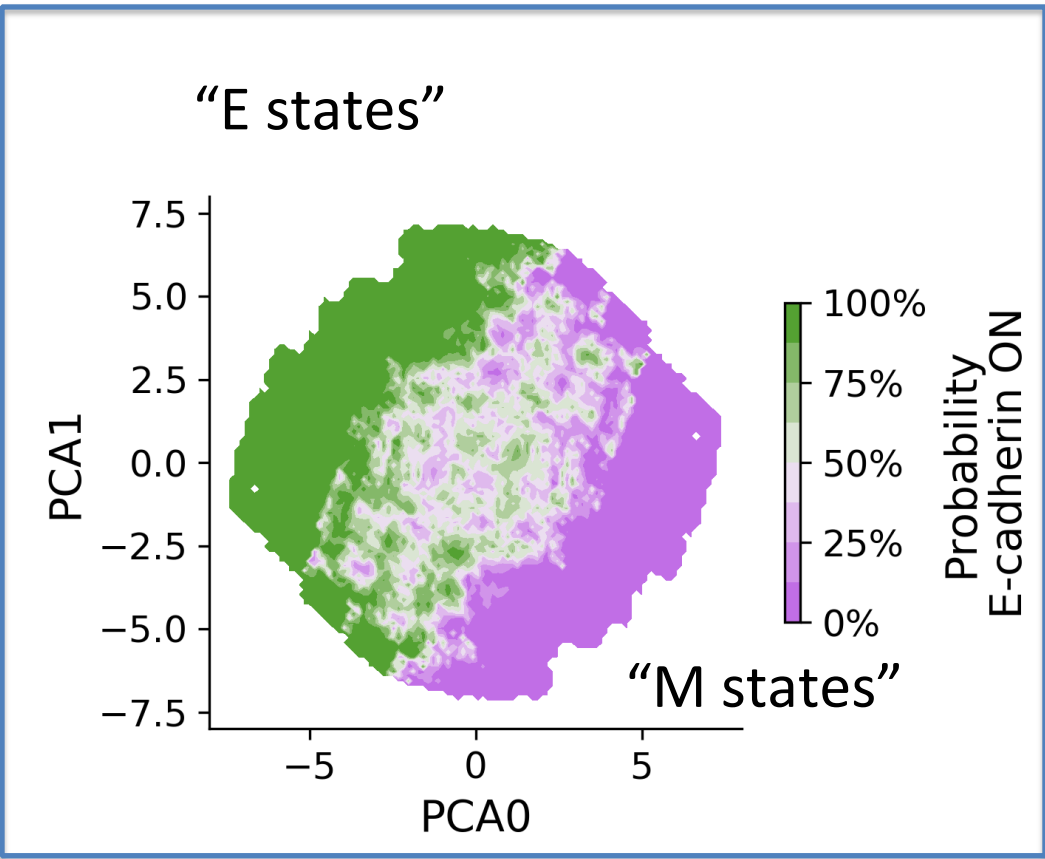
Modified from Steinway et al. 2015

EXPLORING PHENOTYPES (ATTRACTORS STATES)

- Start from a random state $\{s_i\}$
- Update the rule
- Find fixed point

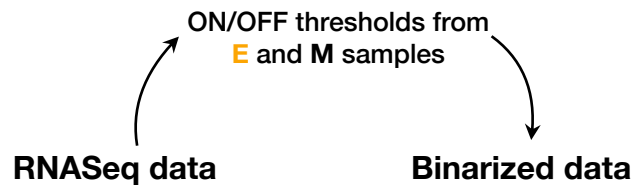
$$H = - \sum_{i,j} J_{ij} s_i s_j$$

* H is not *exactly* minimized by the dynamics but only approximately $J_{ji} \neq J_{ij}$

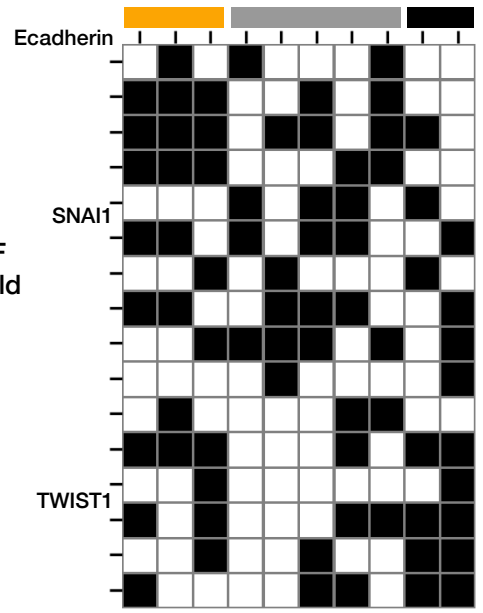
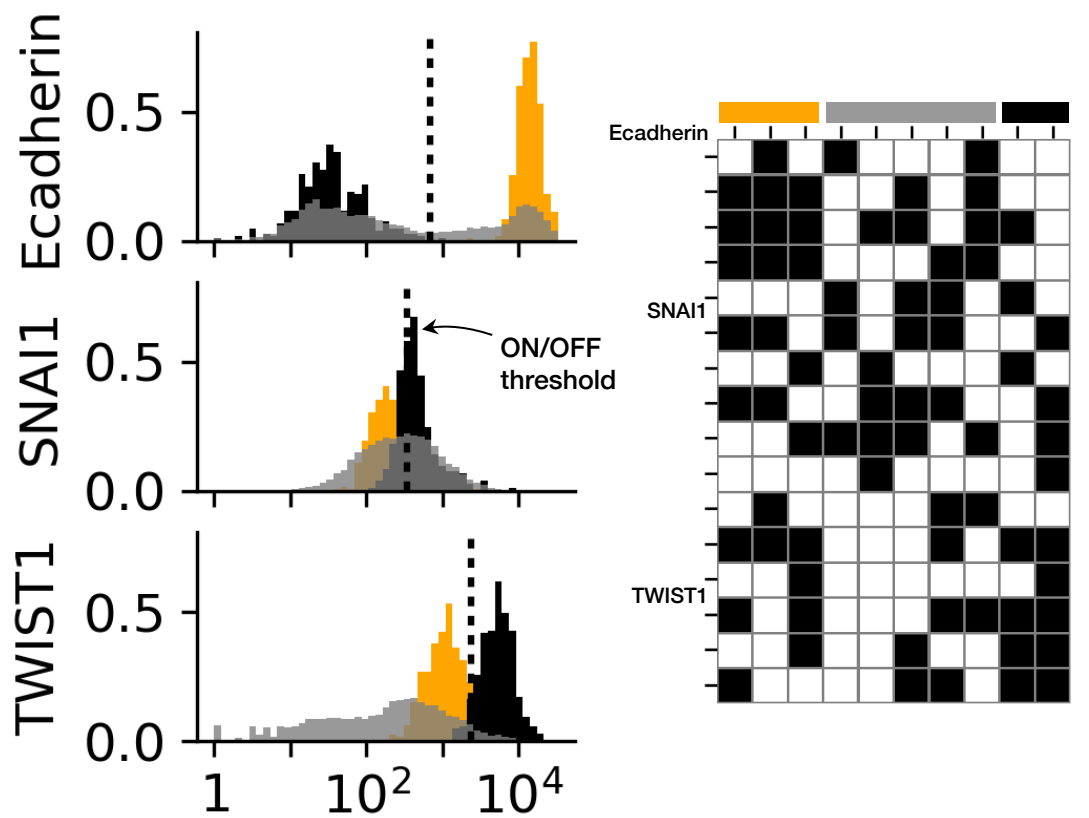


Font-Clos, F., Zapperi, S. & La Porta, C. A. M. Topography of epithelial–mesenchymal plasticity. *Proc. Natl. Acad. Sci. USA* **115**, 5902–5907 (2018).

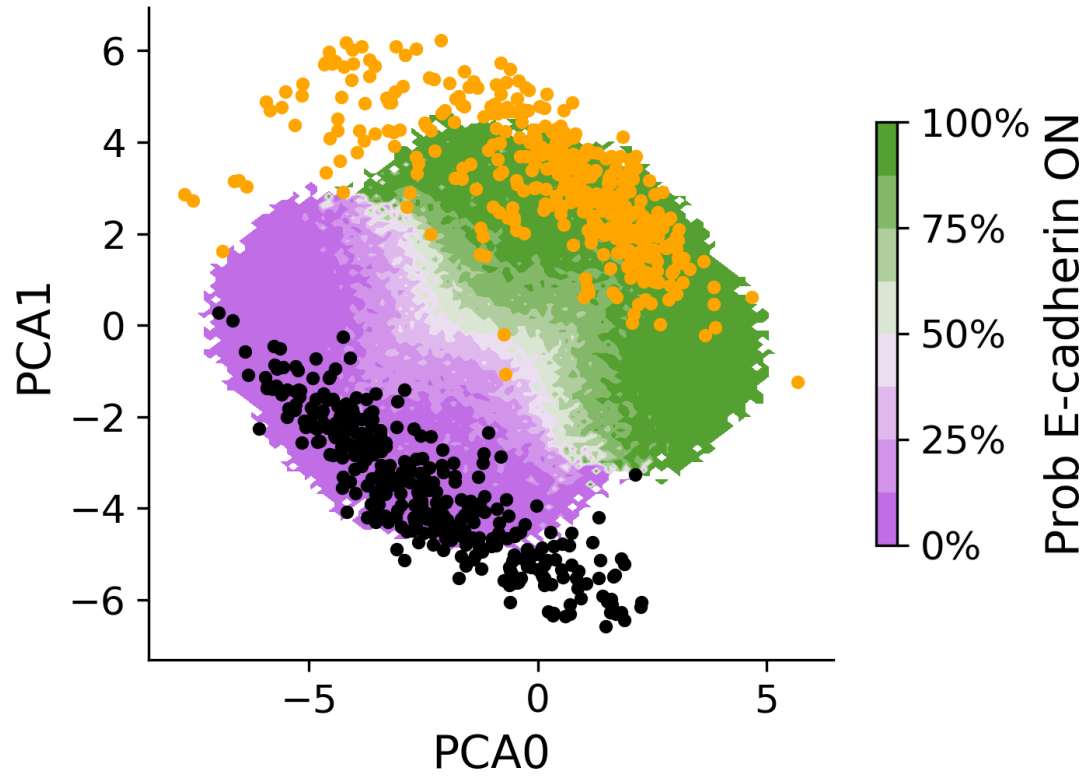
MAPPING RNAseq DATA ON THE EMT LANDSCAPE



GTEX Data (11k transcriptomes from different tissues)

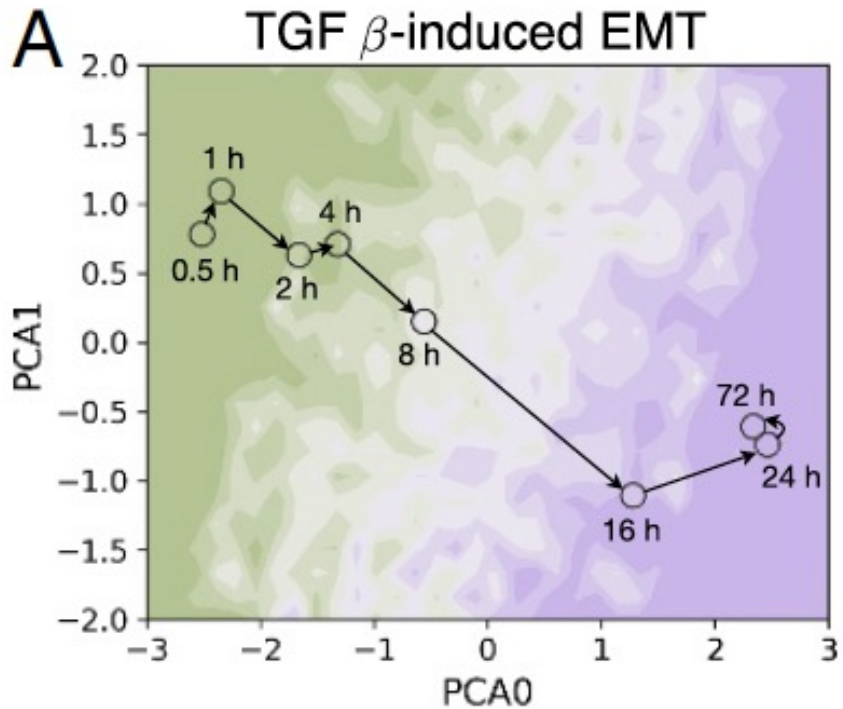


Skin ■
 Fibroblasts ■
 All tissues ■

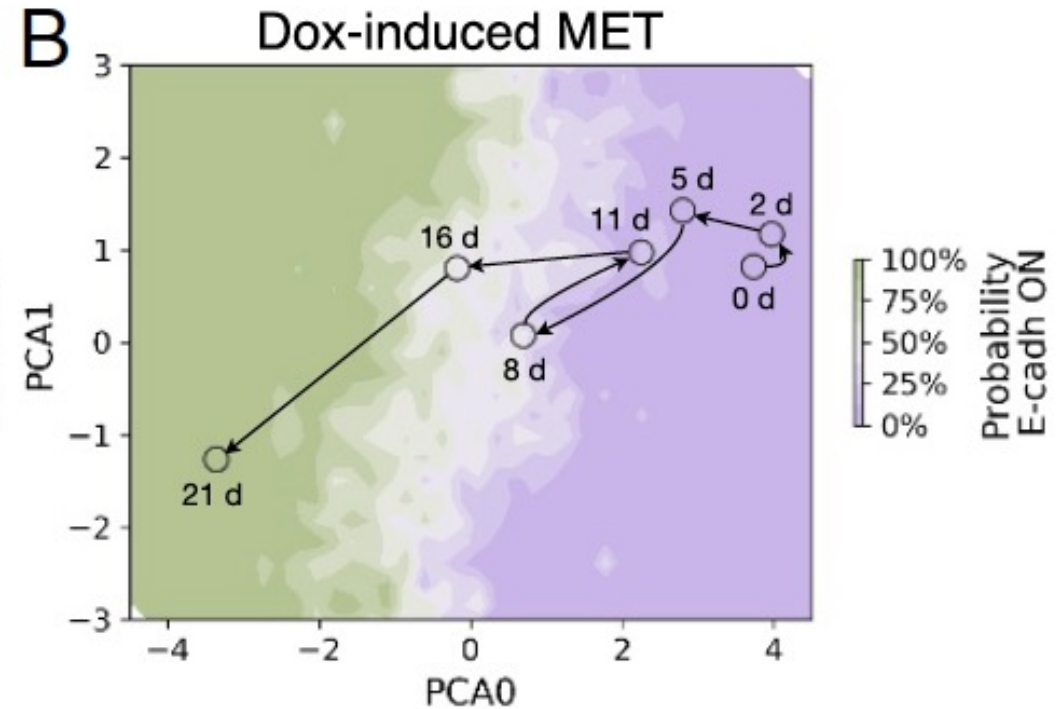


MAPPING PHENOTYPIC TRAJECTORIES

Experiments



(Samavarchi-Tehrani et al
Cell Stem Cells 2010)



Somatic cell reprogramming
(Abnaof et al. BCM Syst. Bio. 2014)

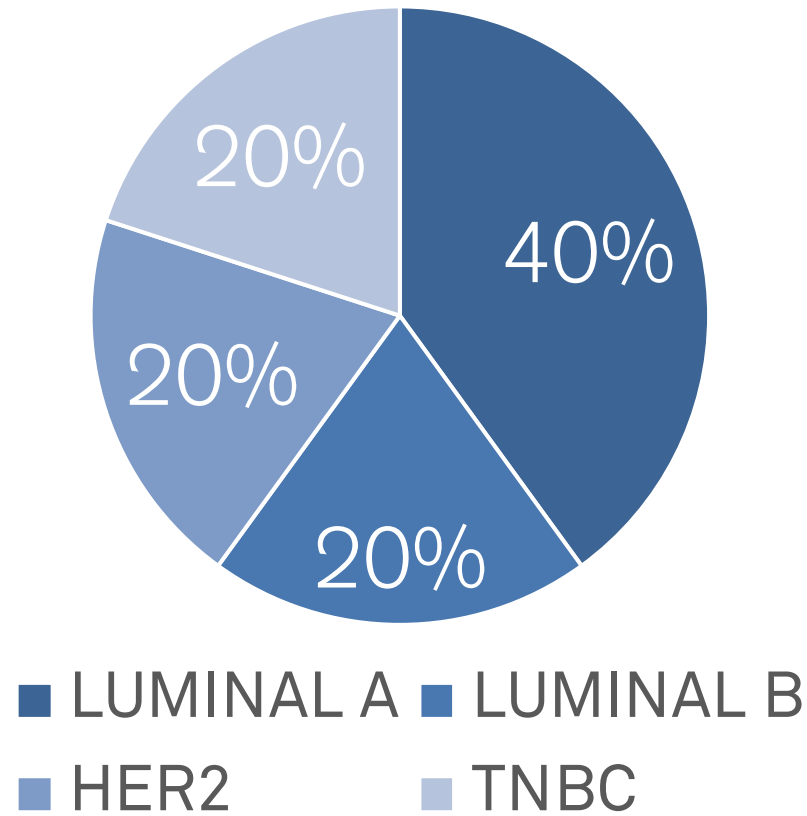
Font-Clos, F., Zapperi, S. & La Porta, C. A. M. Topography of epithelial–mesenchymal plasticity. *Proc. Natl. Acad. Sci. USA* **115**, 5902–5907 (2018).

BREAST CANCER

2.3 MILLION
CASES EACH
YEAR WORLDWIDE

FIRST
CAUSE OF DEATH
FOR WOMEN

BREAST CANCER SUBTYPES



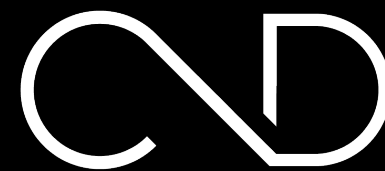
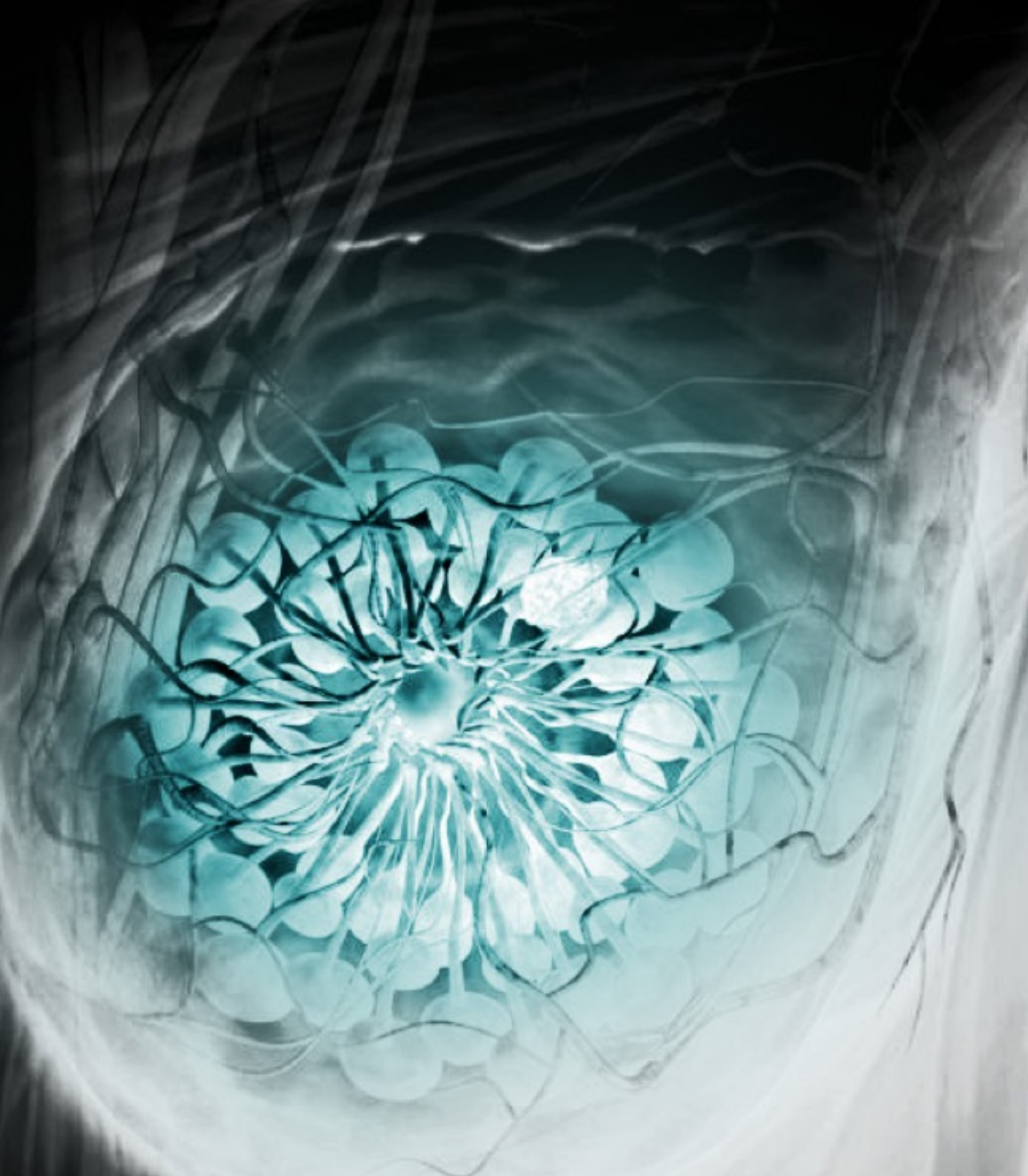
TRIPLE NEGATIVE BREAST CANCER

20% of all breast cancers

No specific drug

30% of patients are
dstimated to be

OVERTREATED



COMPLEXDATA

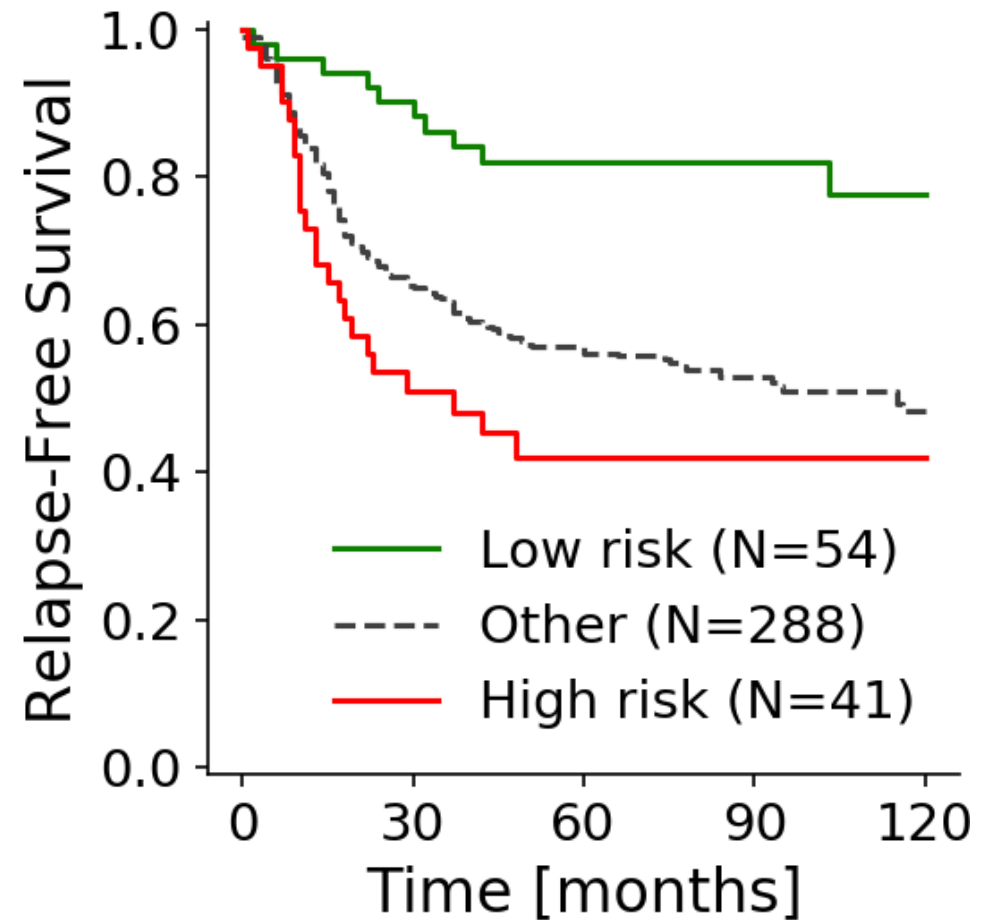
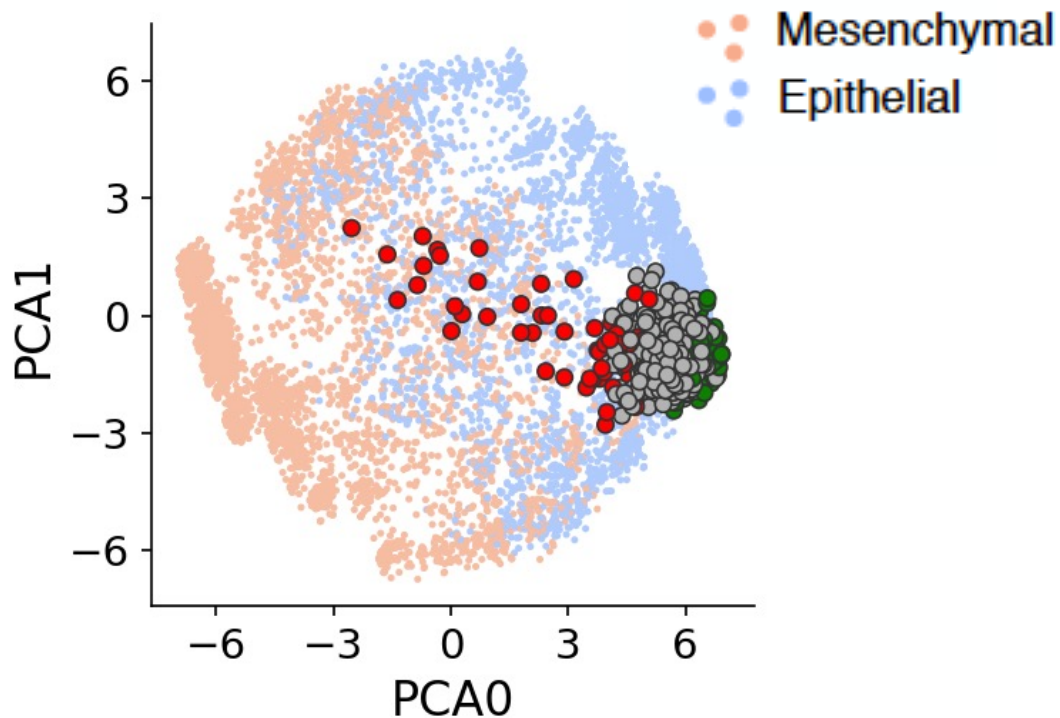
ARIADNE

by ComplexData srl

ARTIFICIAL INTELLIGENCE FOR
BREAST CANCER PREDICTION
AND PERSONALIZED CARE

<http://www.ariadneweb.it>

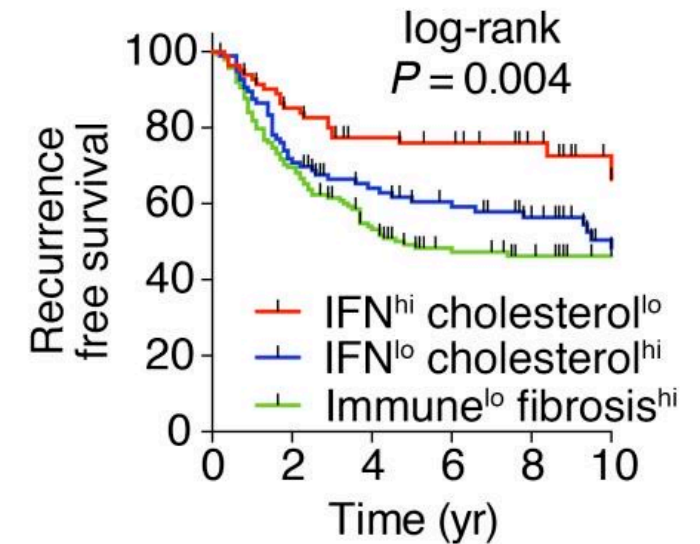
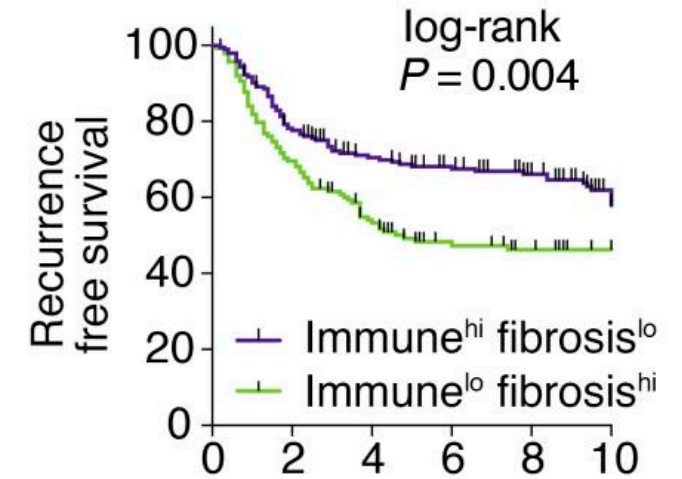
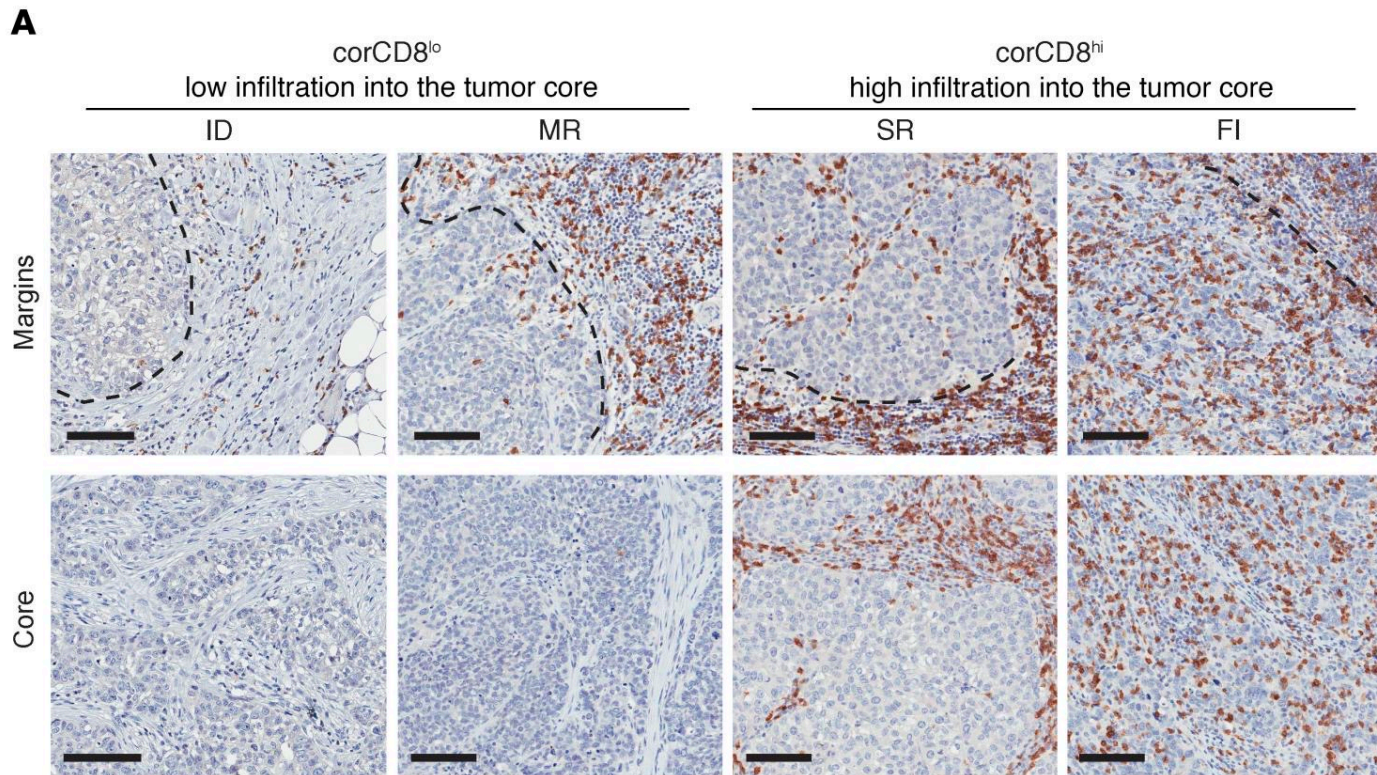
ARIADNE PREDICTS THE RISK OF AGGRESSIVENESS IN TRIPLE NEGATIVE BREAST CANCER



Mont-Clos, F., Zapperi, S. & La Porta, C. A. M. Classification of triple-negative breast cancers through a boolean network model of the epithelial-mesenchymal transition. *Cell Syst.* **12**, 457-462.e4 (2021).

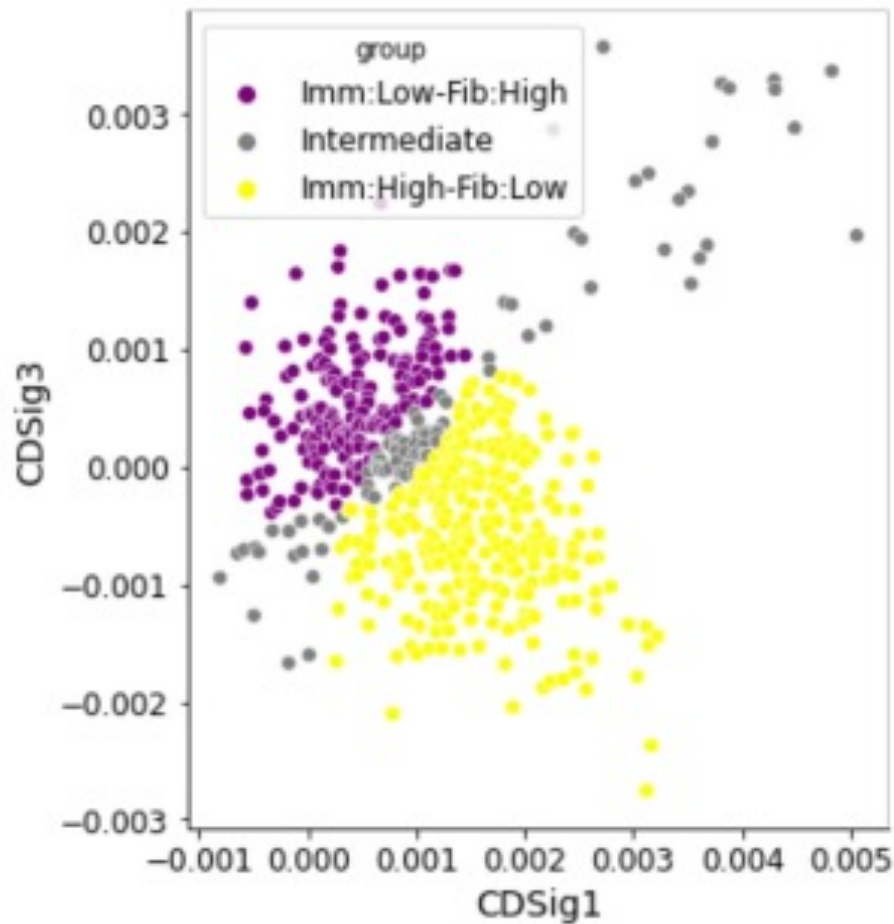
TUMOR IMMUNE MICROENVIRONMENT METASIGNATURE FOR TNBC

Gruosso, T. *et al.* Spatially distinct tumor immune microenvironments stratify triple-negative breast cancers. *J. Clin. Investig.* **129**, 1785–1800 (2019).

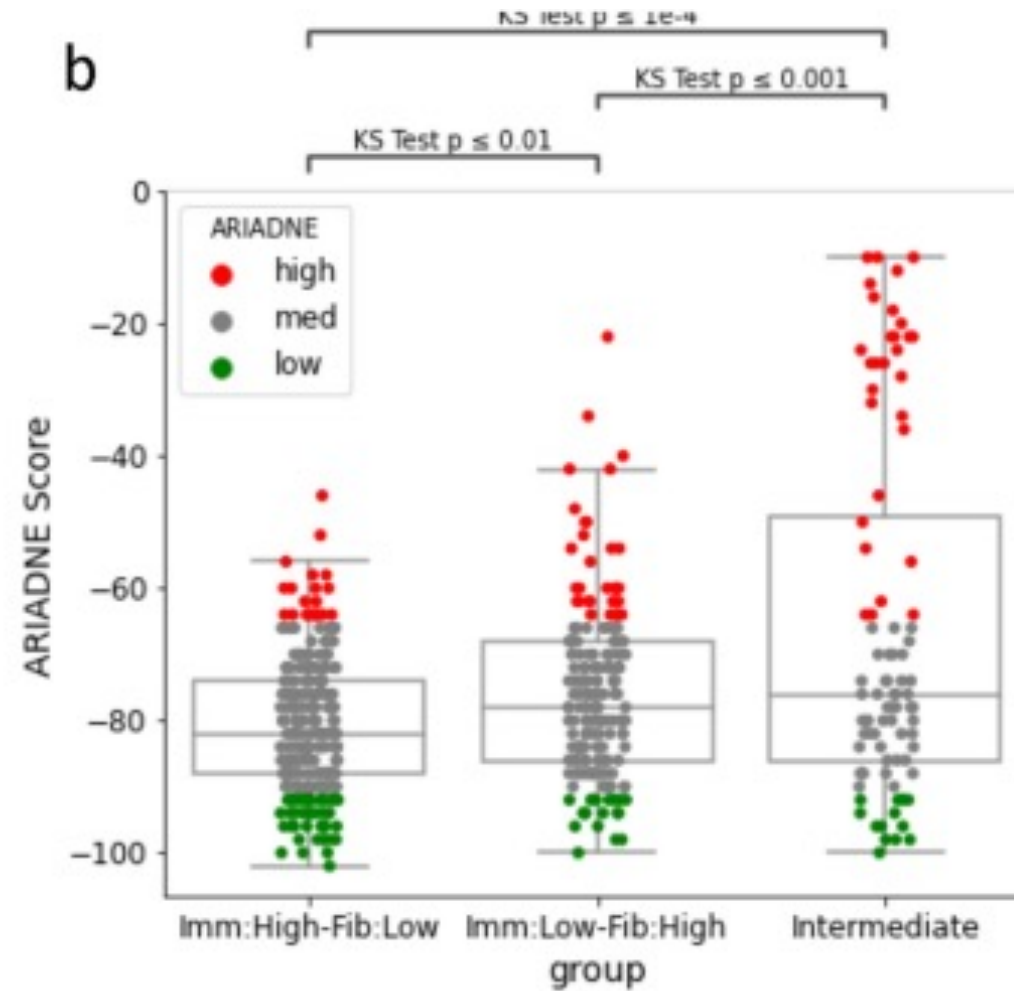


ARIADNE IS DISTINCT FROM THE IMMUNE METASIGNATURE

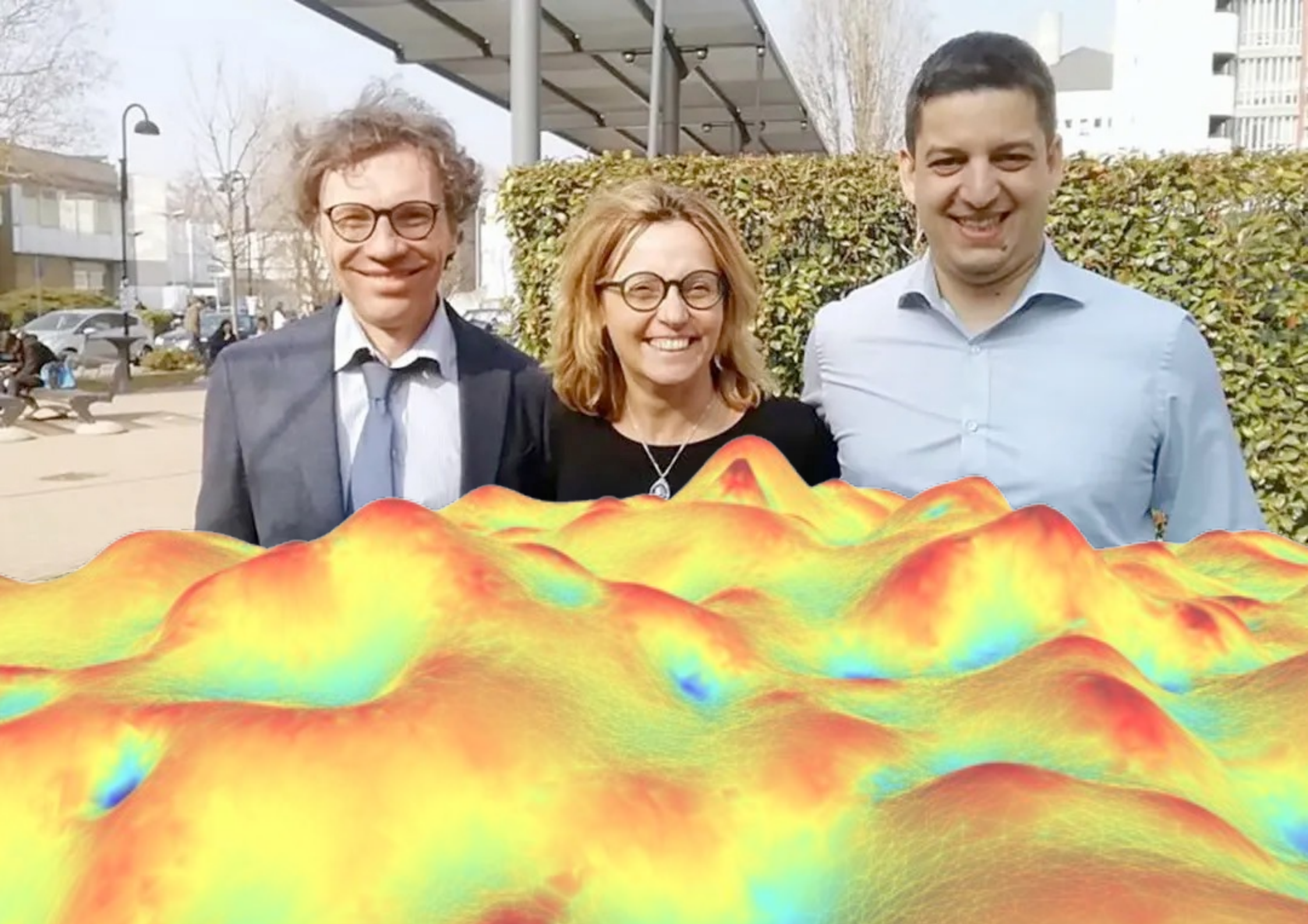
a

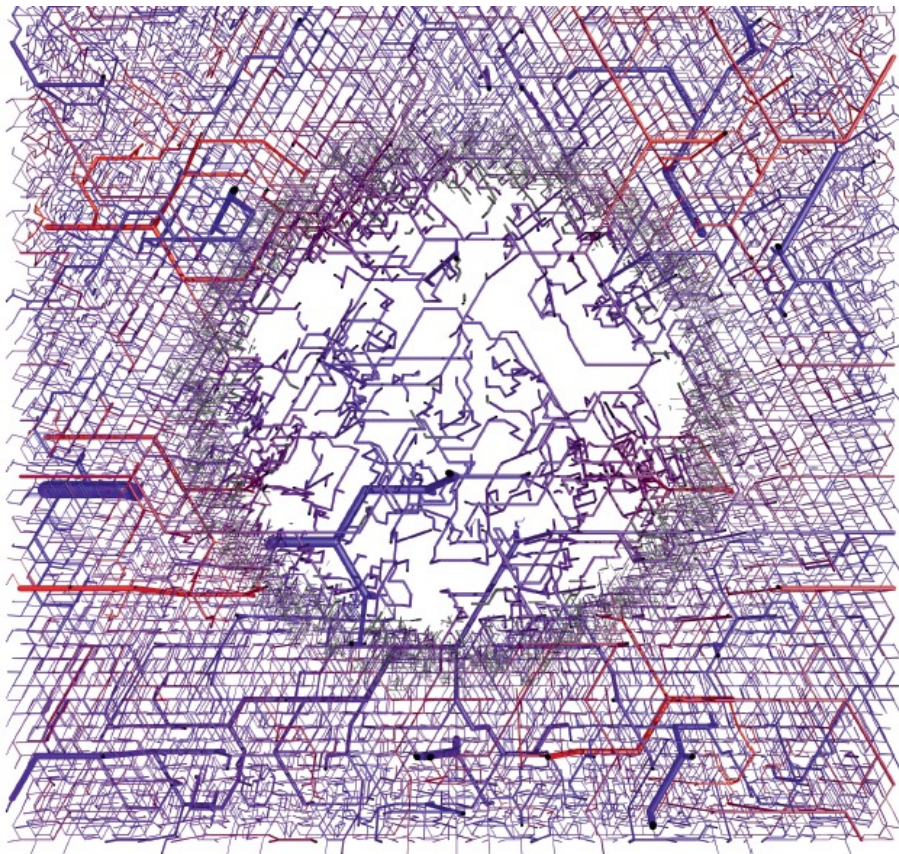


b



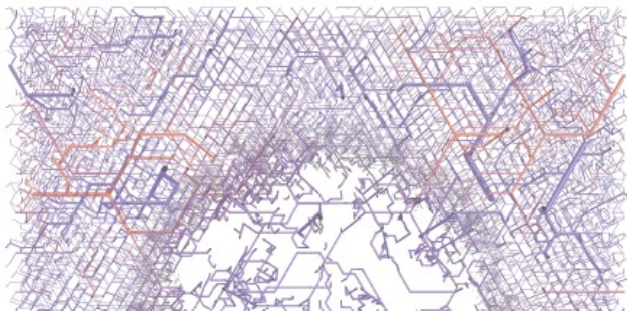
Font-Clos, F., Zapperi, S. & La Porta, C.A.M. Classification of triple negative breast cancer by epithelial mesenchymal transition and the tumor immune microenvironment. *Sci Rep* **12**, 9651 (2022).





Caterina La Porta and Stefano Zapperi

The Physics of Cancer



Publisher: Cambridge University Press

Publication date: May 2017

ISBN: 9781316271759

DOI: 10.1017/9781316271759

THANK YOU FOR YOUR
ATTENTION!